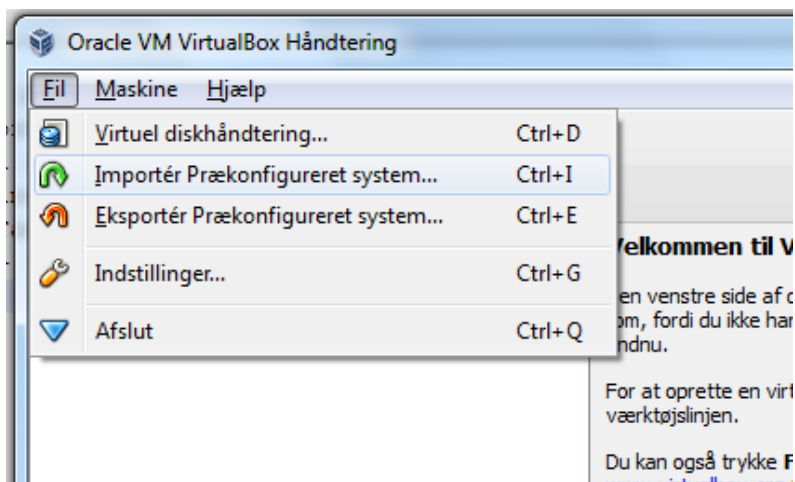


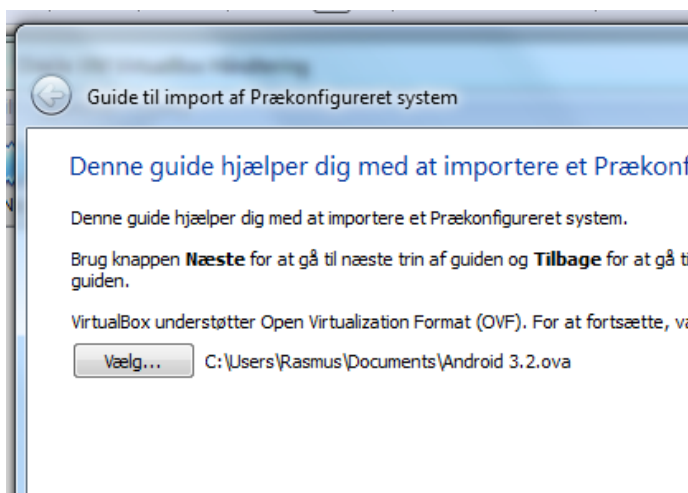
TUTORIAL VIRTUALBOX MED ANDROID

Hent og installer VirtualBox

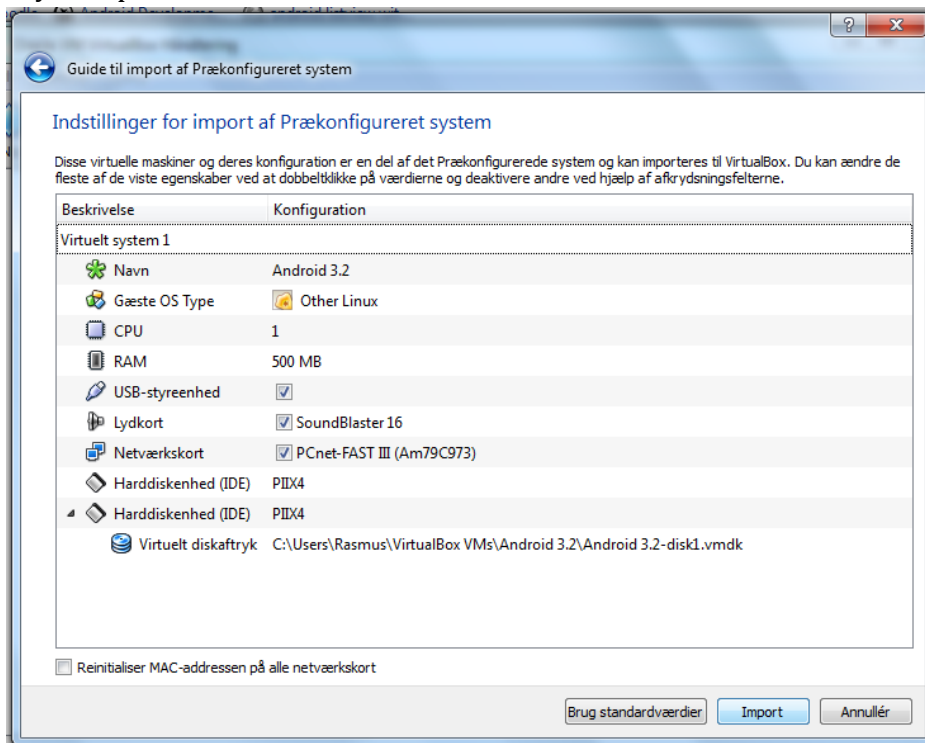
Åben VirtualBox og "import prækonfigureret system..."



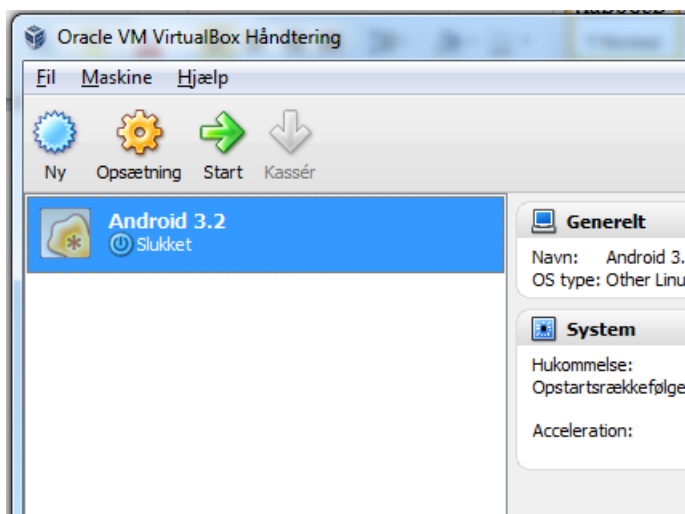
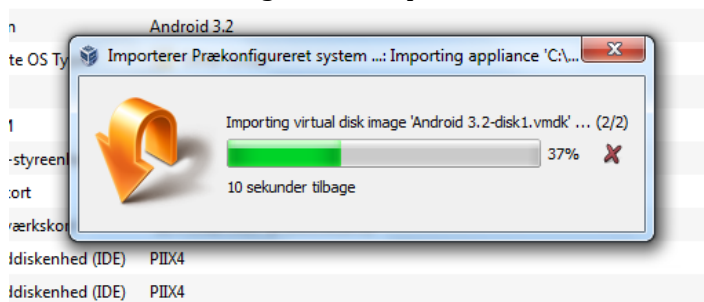
Vælg *.ova filen med Android 3.2



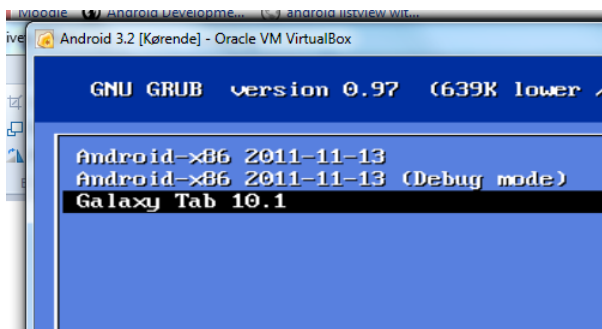
Tryk "Import"



Vent til den er færdig med at importere



Start den nye Virtuelle maskine op (Android 3.2) når du kommer til grub loadere, vælg Galaxy Tab 10.1



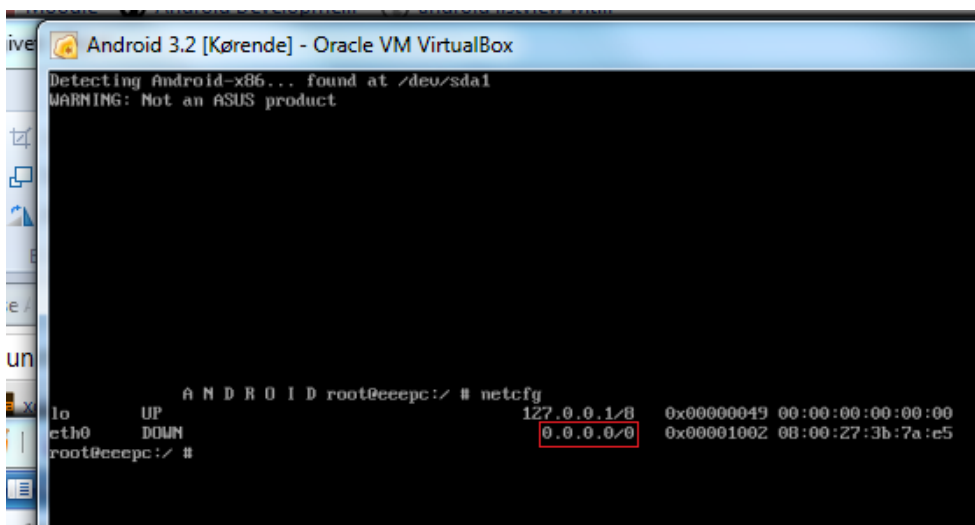
For at få markøren frem tryk Ctrl + I og klik på skærmen



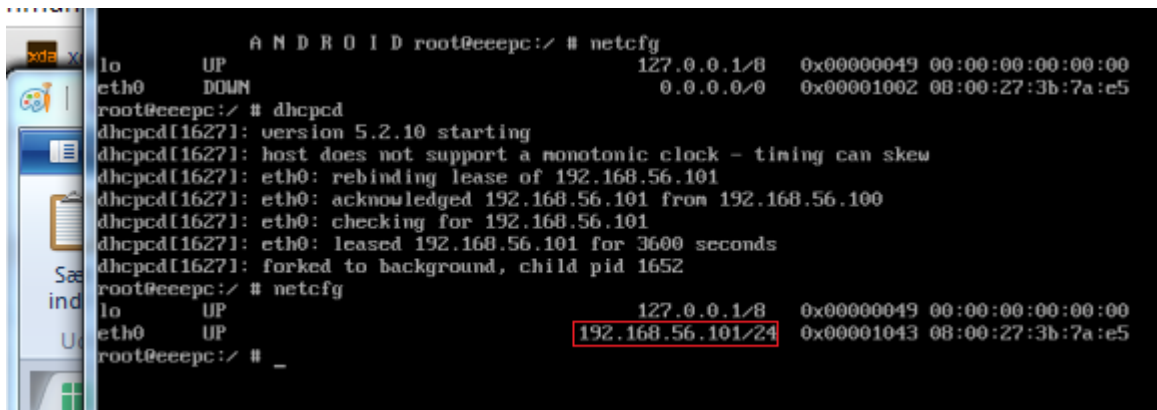
Tryk Alt+F1 for at komme til terminalen (Alt +F7 for at komme tilbage til GUI)

Brug kommandoen "netcfg" for at se om der er uddelt en IP til maskinen

Hvis der ikke er, som på min, så gå til næste skridt, hvis der er en IP så spring over næste skridt.



Brug kommanden "dhcpcd" for at få dhcp serveren til at tildele en ny ip, verificer det ved at bruge netcfg.

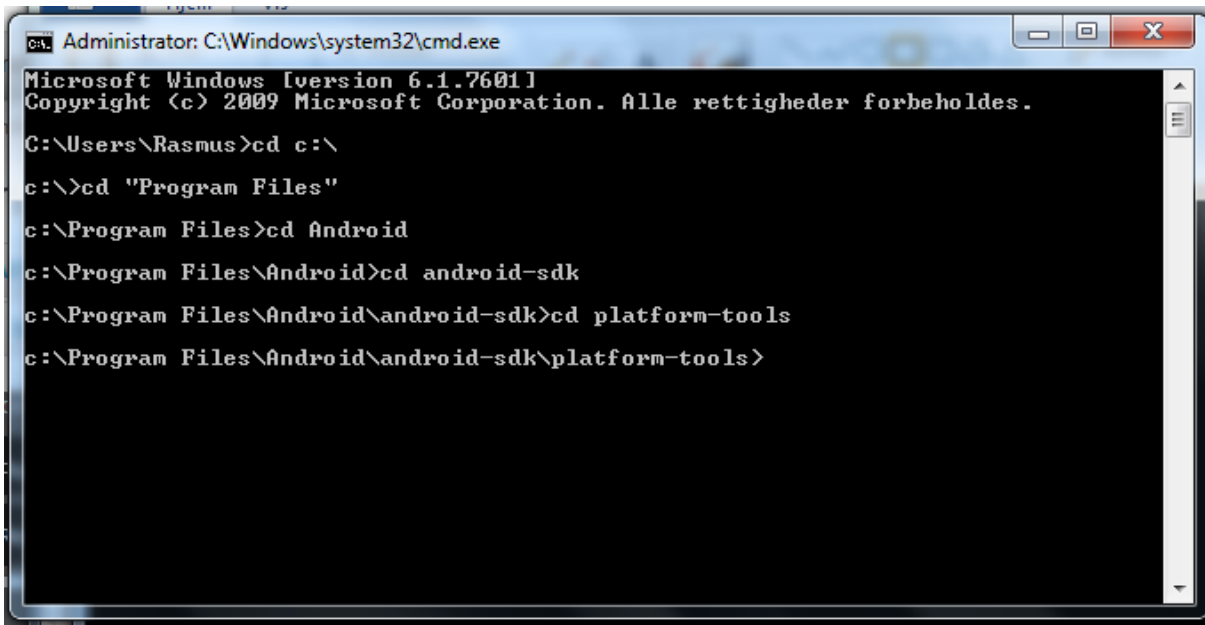


```
ANDROID root@eeepc:/ # netcfg
lo        UP                127.0.0.1/8      0x00000049 00:00:00:00:00:00
eth0      DOWN              0.0.0.0/0        0x00001002 08:00:27:3b:7a:e5
root@eeepc:/ # dhcpcd
dhcpcd[1627]: version 5.2.10 starting
dhcpcd[1627]: host does not support a monotonic clock - timing can skew
dhcpcd[1627]: eth0: rebinding lease of 192.168.56.101
dhcpcd[1627]: eth0: acknowledged 192.168.56.101 from 192.168.56.100
dhcpcd[1627]: eth0: checking for 192.168.56.101
dhcpcd[1627]: eth0: leased 192.168.56.101 for 3600 seconds
dhcpcd[1627]: forked to background, child pid 1652
root@eeepc:/ # netcfg
lo        UP                127.0.0.1/8      0x00000049 00:00:00:00:00:00
eth0      UP                 192.168.56.101/24 0x00001043 08:00:27:3b:7a:e5
root@eeepc:/ # _
```

Forbind den virtuelle maskine til ADB via ip-adressen fundet i terminalen på maskinen (netcfg -> eth0)

DET KAN GØRES SOM FØLGENDE I WINDOWS:

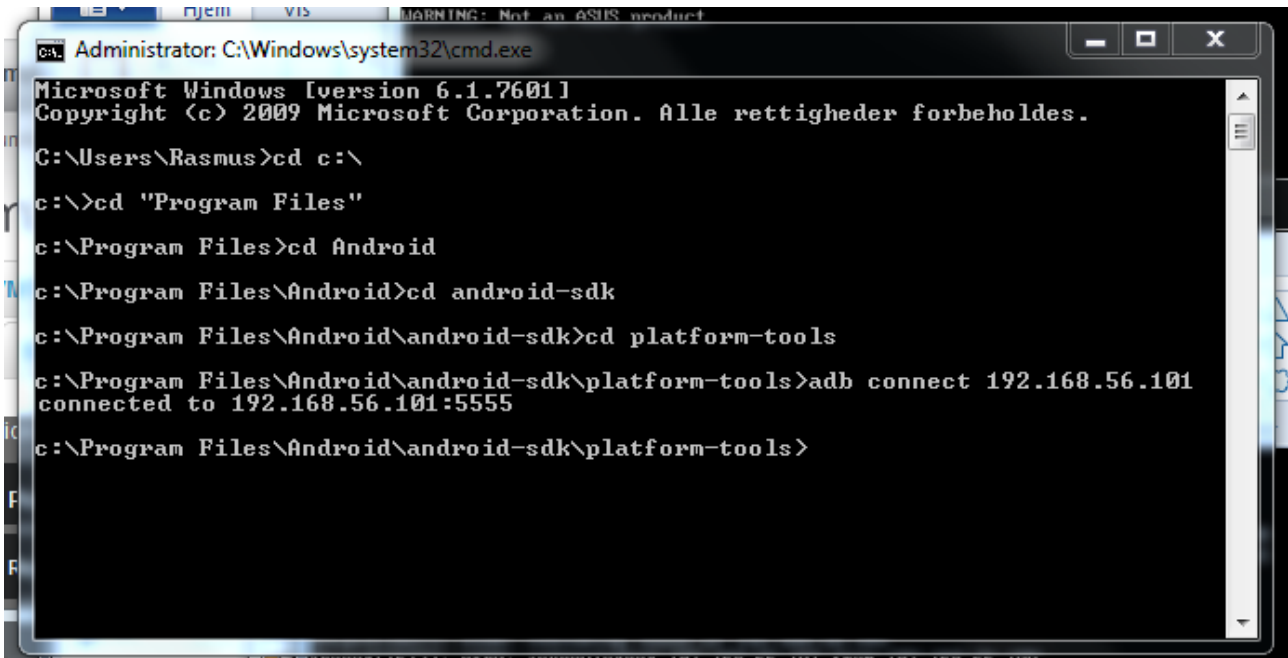
Naviger til den mappe hvor android sdk'et ligger og gå ind i mappen platform-tools



```
Administrator: C:\Windows\system32\cmd.exe
Microsoft Windows [version 6.1.7601]
Copyright (c) 2009 Microsoft Corporation. Alle rettigheder forbeholdes.

C:\Users\Rasmus>cd c:\
c:\>cd "Program Files"
c:\Program Files>cd Android
c:\Program Files\Android>cd android-sdk
c:\Program Files\Android\android-sdk>cd platform-tools
c:\Program Files\Android\android-sdk\platform-tools>
```

Brug kommandoen "adb connect <virtuel-maskines-ip>" hvor den virtuelle maskines ip var den vi fandt på devicet tidligere ved at bruge kommandoen "netcfg" i terminalen



```
Administrator: C:\Windows\system32\cmd.exe
Microsoft Windows [version 6.1.7601]
Copyright (c) 2009 Microsoft Corporation. Alle rettigheder forbeholdes.

C:\Users\Rasmus>cd c:\
c:\>cd "Program Files"
c:\Program Files>cd Android
c:\Program Files\Android>cd android-sdk
c:\Program Files\Android\android-sdk>cd platform-tools
c:\Program Files\Android\android-sdk\platform-tools>adb connect 192.168.56.101
connected to 192.168.56.101:5555
c:\Program Files\Android\android-sdk\platform-tools>
```